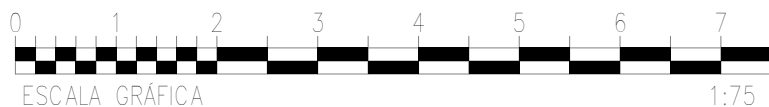
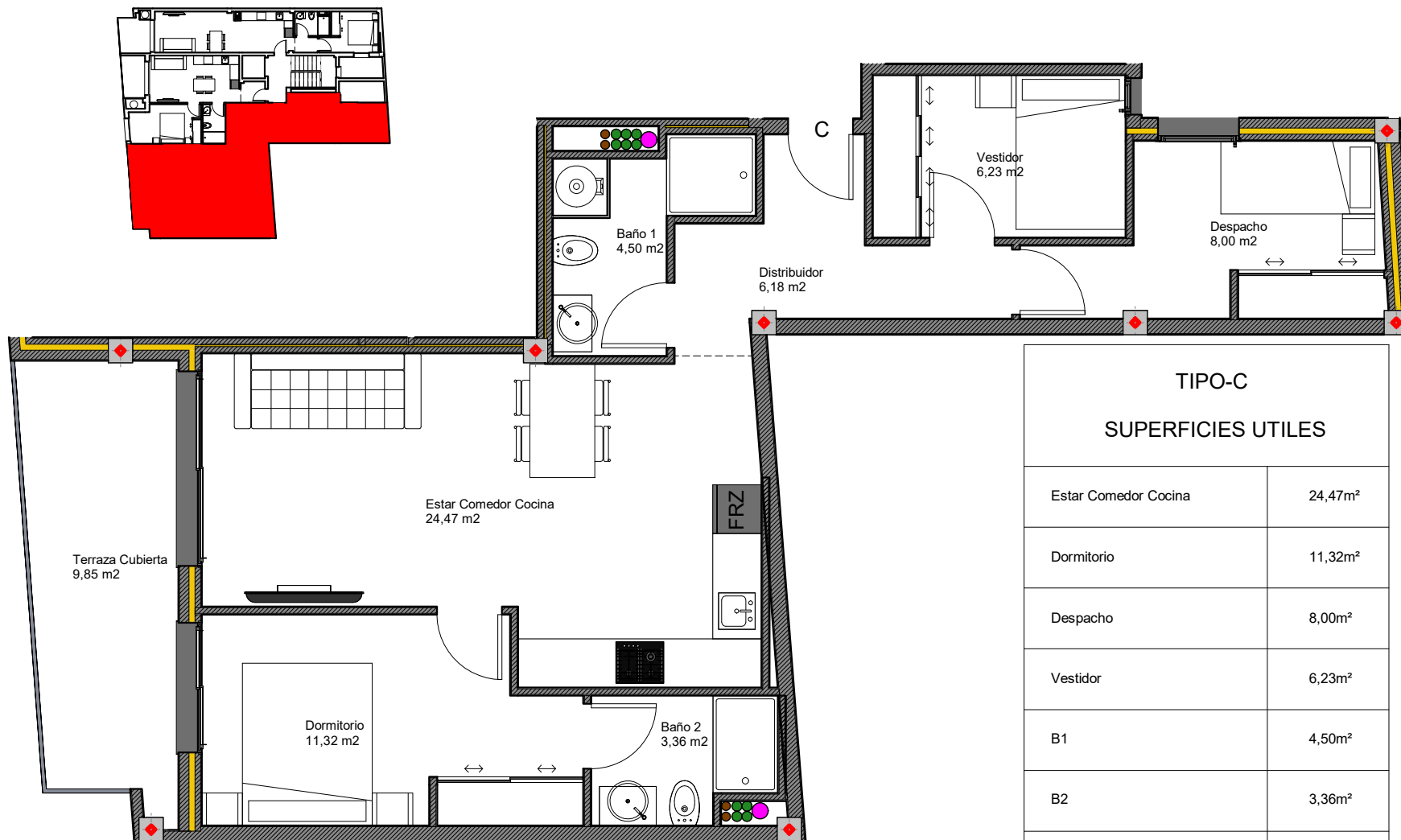




TIPO(2ª Y 3ª)-C



TIPO-C	
SUPERFICIES UTILES	
Estar Comedor Cocina	24,47m²
Dormitorio	11,32m²
Despacho	8,00m²
Vestidor	6,23m²
B1	4,50m²
B2	3,36m²
Distribuidor	6,18m²
Terraza cubierta	9,85m²
TOTAL SUP. UTIL	73,91m²
TOTAL SUP. CONST+P.P+ZC	96,75m²

TIPO-C